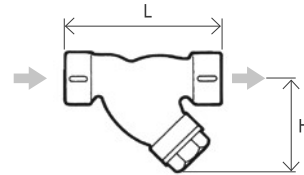


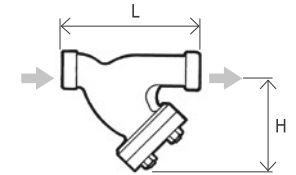
# Y



Dimensions YM1



YSF-W



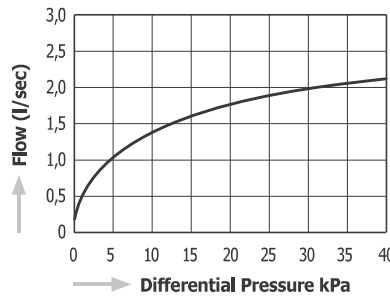
Model	Connections	Size	Max. Operating Pressure		Max. Operating Temperature		Mesh	Dimensions (mm)		Dimensions (in)		Body Material	Weight	
			MPa	psig	°C	°F		L	H	L	H		kg	lb
YM1	Screwed Rc, NPT	1/2"	2,0	290	220	428	60	75	55	3.0	2.2	Ductile Cast Iron	0,5	1.1
		3/4"						90	70	3.5	2.8		0,9	2.0
		1"						110	85	4.3	3.3		1,4	3.1
YSF-W	Socket Weld JIS, ASME, DIN	1/2" - 1"	4,9	710	425	797	60	140	125	5.5	4.9	Forged Steel A105	5,0	11.0
		1 1/4" - 2"						190	170	7.5	6.7	Forged Steel S25C	9,5	20.9

## Vacuum Breaker CV11, CVU15

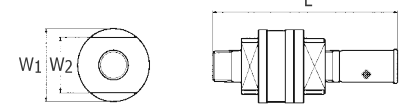
# CV11, CVU15



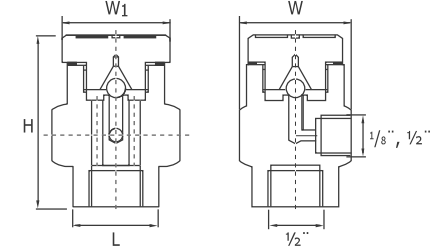
Capacity Chart CVU15



Dimensions CV11



CVU15



Model	Connections		Size	Max. Operating Pressure		Max. Operating Temperature		Dimensions (mm)					Dimensions (in)					Body Material	Weight	
				MPa	psig	°C	°F	L	H	W	W1	W2	L	H	W	W1	W2		kg	lb
CV11	Male thread R		1/2"	0,9	130	150	302	130	50	38	5,1	2,0	1,5	Stainless Steel SUS304	0,8	1,8				
			3/4"					135									5,3			
			1"					135									5,3			
CVU15	System connection	Air inlet connection	1/2" x 1/8"	2,1	305	450	842	32	55	41	36	1,26	2,17	1,61	1,42	Stainless Steel AISI 304 (DIN 1.4301)	0,44	0,97		
	1/2" Screwed (BSP, BSPT, NPT)	1/8", 1/2" Screwed (BSP, BSPT, NPT)	1/2" x 1/2"														70	2,75	0,55	1,21

## Anti-Freezing Valve F1

# F1

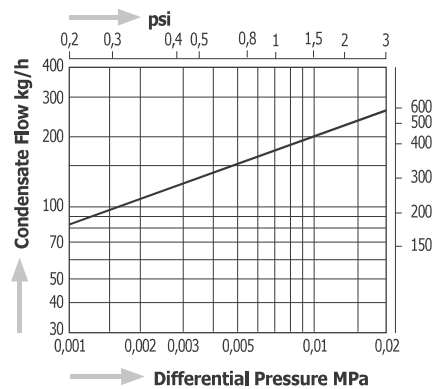
### Features

1. Easy installation: compact in size
2. No adjustment
3. Easy maintenance

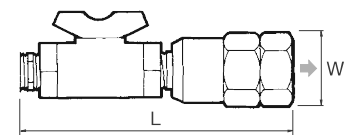
### Suitable for

Discharge of remaining condensate out of steam traps and pipe lines

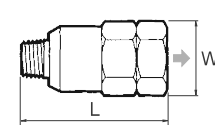
Capacity Chart F1



Dimensions F1B



F1



Model	Connection	Size	Max. Operating Pressure		Working Pressure				Max. Operating Temperature		Dimensions (mm)		Dimensions (in)		Body Material	Weight	
			MPa	psig	Opening		Closing		°C	°F	L	W	L	W		kg	lb
			MPa	psig	MPa	psig	MPa	psig	°C	°F	L	W	L	W		kg	lb
F1B	Screwed Rc, NPT	1/4"	1,0	145	0,01 - 0,04	1,5 - 5,8	0,02 - 0,05	2,9 - 7,3	220	428	113	27	4,4	1,1	Brass C3604	0,19	0,42
		3/8"									119		4,7			0,23	0,51
F1		1/4", 3/8"	1,6	230							52	2,0	0,13	0,29			